



Trail Signage and App Proposal

Trail Signage and App Committee – Lianna Grice, Dave Weir, Dave Heath, Collin Kallio, Chris Cybulskie, Owen MacKinnon, Devin Wittig, and Roberta Nakoochee

1



Trail Descriptions & Maintenance Recommendations

Pine Lake Trail

- Paved trail from Dezadeash Day Use Area to Pine Lake Campground
- Include segment from Source Motors to Top Spot
- Seasonal mowing for sightlines, wildlife interactions and invasive species

Lagoon Loop

- Loop trail north of Environmental Control Facility (outside of fenced property)
- Popular with birders
- Seasonal brushing required along north fence line

Willow Acres Trails

- Extensive trail network north of Willow Acres and Marshall Creek Road, greatly valued by local community
- Short re-routes required around wet areas
- Brushing required to re-establish trail from Alaska Highway to Lupine Drive

2

Trail Descriptions & Maintenance Recommendations

Tomlin Hill Loop

- Intricate network of trails starting at Tomlin Hill, bounded by Alaska Highway North, Logan Street, Quill Crescent and Pumphouse 3
- Seasonal brushing and garbage collection

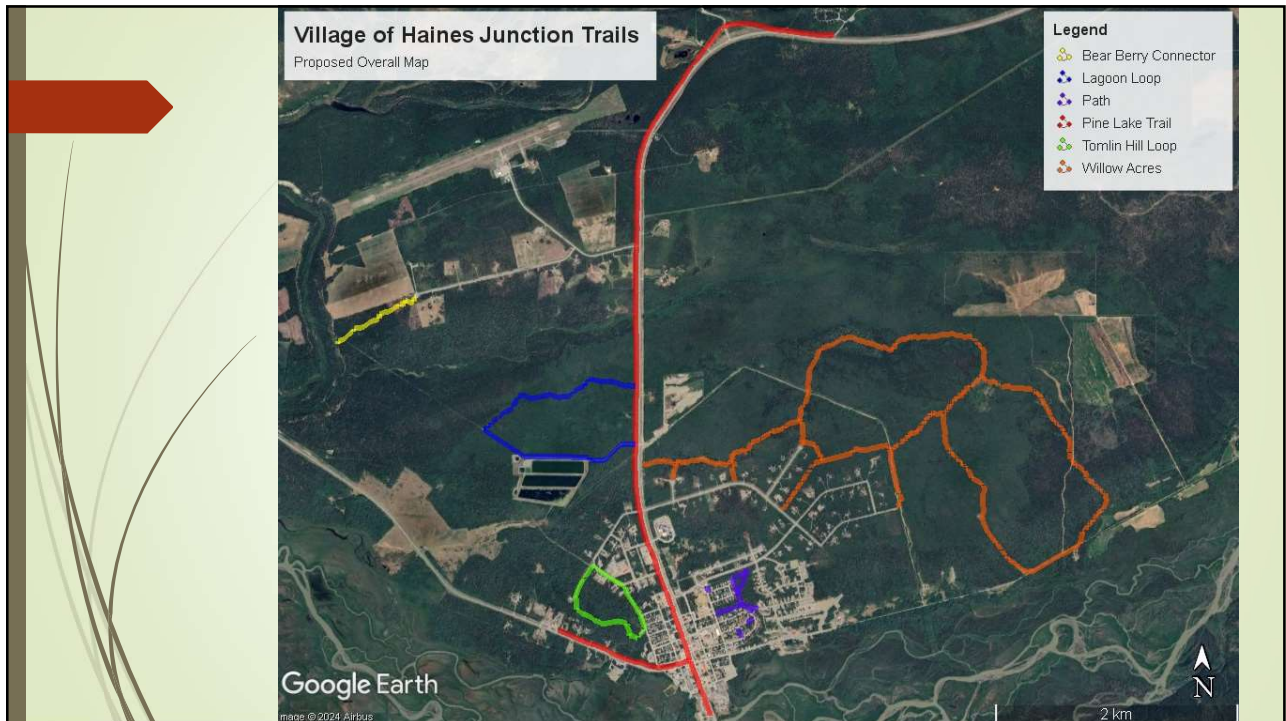
Bear Berry Connector

- New trail connecting Bear Berry Road to Pine Creek and existing Forestry/St. Elias Ski Club trails
- Additional work required to complete trail construction/establishment

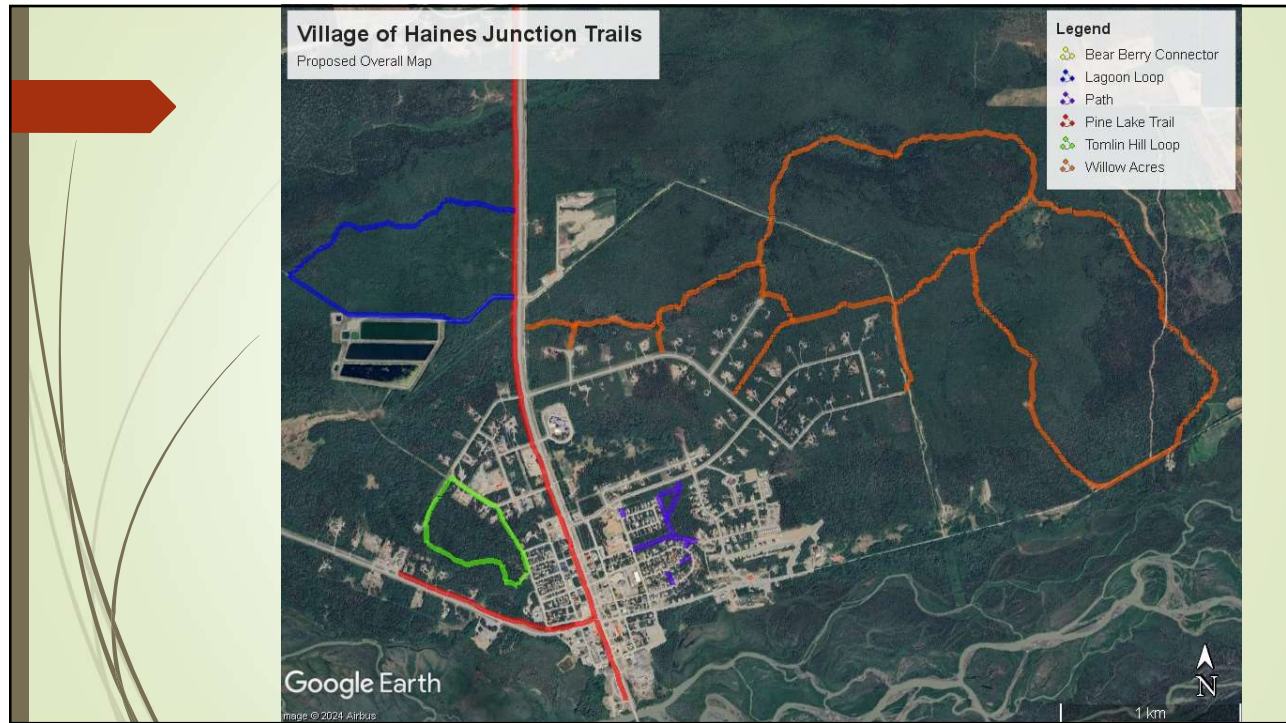
Urban Trails

- Short trails, primarily east of the Alaska Highway, that connect urban areas
- Includes the Legacy Trail and trail from Legacy Trail to Willow Acres Road
- Legacy Trail requires regular maintenance of gravel surface (grading and compacting)

3



4



5

Trail Signage

Large information signs

- Located at Convention Center, Da Ku Cultural Center and Pine Lake Day Use Area
- Panel A - Overall trail map with distances and QR code directing to AllTrails and VHJ website
- Panel B - Information panel (multi-use trail etiquette, bear safety, traveling on First Nations traditional territory)

Trail access signs

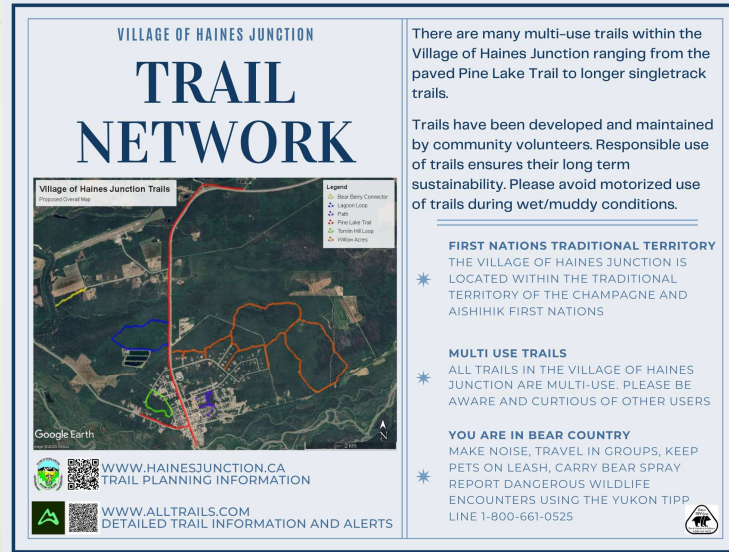
- Located at trail access points
- Includes trail name and QR code directing to AllTrails

Directional signs

- Located at frequent intervals throughout trail and at any crossings

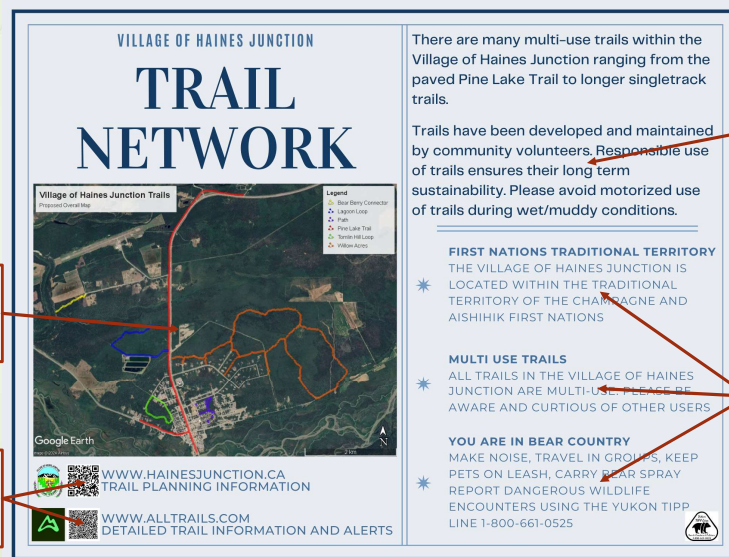
6

Information Signs



7


Information Signs





8


Access Point Signs

- Located at main trail access points



Lagoon Loop
2.9km 





Bear Berry Connector
0.8km 


9


Directional Signs


- Directional sign should be installed facing each direction of travel at every decision point.
- Decision points include trail intersections and significant changes in direction.
- A minimum of two signs should be posted at every decision point, one for each direction of travel.











Lupine Dr


Marshall Creek Rd

10

Signage Cost Estimate

Description	Quantity	Estimated Unit Rate	Estimated Cost
Information Sign	3	\$163.60	\$490.80
Access Point Sign	11	\$21.51	\$236.61
Directional Sign	100	\$8.03	\$803.00


Total (including GST) \$1,606.93
mapping and graphic design not included

11

Online Trail Information

- Trail information should be hosted in two locations
- www.hainesjunction.ca
 - Include information on large information signs and additional information regarding trail development/history
- www.alltrails.com through the Public Lands Program
 - Most likely to be accessed by visitors and new residents
 - Post trail alerts as needed

12



AllTrails | Public Lands Program

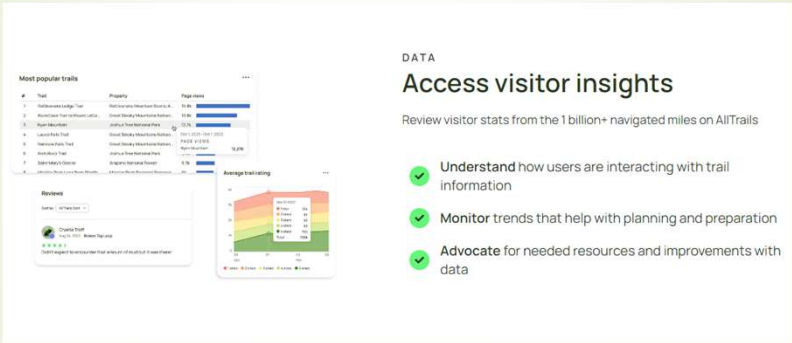
Engage with the world's largest trail community

Powerful tools for better trails

The Public Lands program is a **free resource** for agencies and non-profit organizations that helps partners:

- ✔ Understand how visitors use your trails
- ✔ Manage trail information to help your visitors recreate responsibly
- ✔ Connect with AllTrails' 65 million+ users and share up-to-date alerts

13



DATA

Access visitor insights

Review visitor stats from the 1 billion+ navigated miles on AllTrails

- ✔ Understand how users are interacting with trail information
- ✔ Monitor trends that help with planning and preparation
- ✔ Advocate for needed resources and improvements with data

14

TRAIL MANAGEMENT

Curate the trail-goer experience

Maintain reliable and accurate info on the most-used trail app in the world

- ✓ **Manage** route lines, starting points, and parking locations
- ✓ **Communicate** rules, regulations, and route recommendations
- ✓ **Prepare** visitors for a great day on the trail

15

CONNECTION

Reach your audience

Ensure visitors know what to expect on and off the trail

- ✓ **Prioritize** the information you want visitors to see first
- ✓ **Communicate** real-time trail conditions and local knowledge
- ✓ **Reduce** search and rescue incidents with up-to-date closures, warnings, and alerts

16



Next Steps

- ▶ Public engagement to present proposal
- ▶ Gather feedback on trail names, history and maintenance needs, information sign content
- ▶ Engage mapping and graphic design support to develop signs
- ▶ Install signs at selected locations
- ▶ Add trail information to Village of Haines Junction website and AllTrails (via Public Lands Program)